

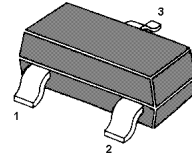
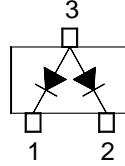
# BAW56

## Features

- Small package
- Low forward voltage
- Fast reverse recovery time
- Small total capacitance

## Applications

- Ultra high speed switching application



SOT-23 Plastic Package

## Absolute Maximum Ratings ( $T_a = 25\text{ }^\circ\text{C}$ )

Parameter	Symbol	Value	Unit
Peak Repetitive Reverse Voltage	$V_{RRM}$	85	V
Continuous Reverse Voltage	$V_R$	75	V
Forward Current (DC)	Single Diode Loaded	215	mA
	Double Diode Loaded	125	
Repetitive Peak Forward Current	$I_{FRM}$	450	mA



# BAW56

## Silicon Epitaxial Planar Switching Diode

### Typical Characteristics

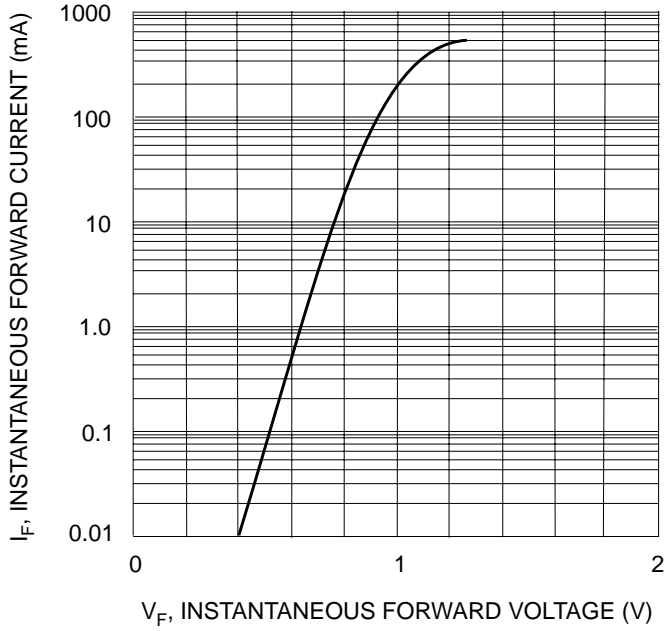


Fig. 1 Forward Characteristics

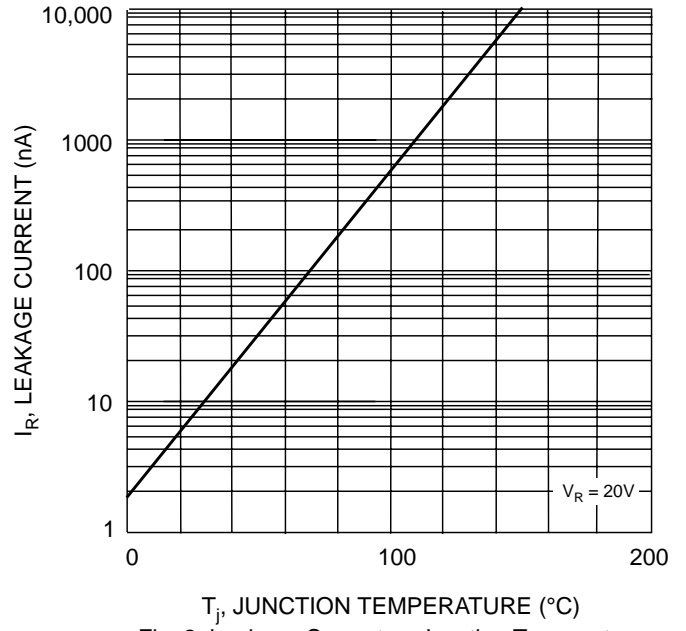


Fig. 2 Leakage Current vs Junction Temperature

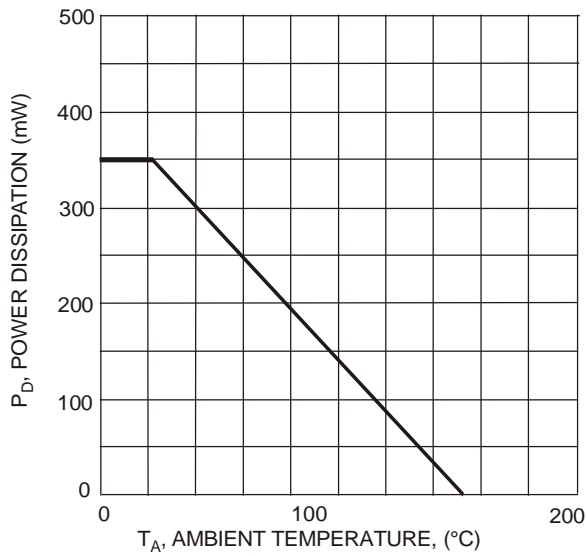
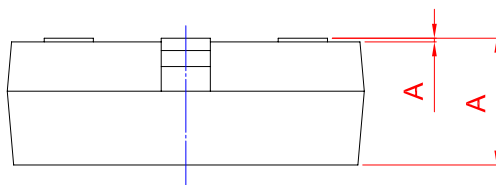
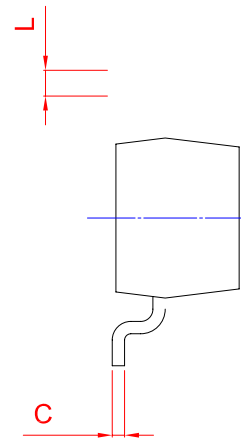
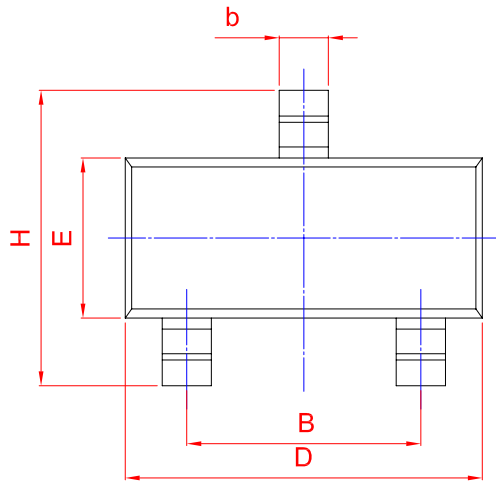
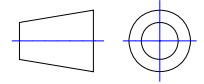
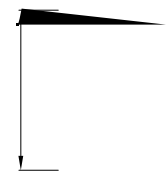


Fig. 3 Power Derating Curve, Total Package



UNIT	A				D	E		A <sub>1</sub>	
mm	1.40 0.95		0.50 0.35	0.19 0.08	3.10 2.70				